



Quoting with NTAR (new times and rates)

Please refer to www.ntar.com.au for the latest rules and allowable charges, and look out for Crashzone blogs about updates to NTAR.

Setting up Crashzone for NTAR

From the settings page add your shop rate this will be default rate for all NTAR quotes. The R&R rate, Repair rate and paint rate are all set the same as your shop rate. Once entered scroll to the bottom of the settings page and click submit to save the changes.

Crashzone email address @crashzone.com.au

RR rate	<input type="text" value="85.00"/>
Repair rate	<input type="text" value="85.00"/>
Paint rate	<input type="text" value="85.00"/>

Part markup

Quote comment

Invoice comment

Parts comment

OurRef from

Invoice from

Header style Picture Detail

Backup:

OurRef From: To:

DOL settings
WebTRIM settings
ARNIE settings
ORM settings
PNET settings

Selecting the vehicle from the NTAR list

When quoting a vehicle in NTAR times select the correct vehicle from the NTAR vehicle list before adding items to the quote.

From the details page :

- Select the correct paint group in the rates box
S1 = 1 layer
S2 = 1 layer
M1 = 2 layer
M2 = 2 layer
M3 = 3 layer
- Select the body type from the drop down box in the rates section
- Select the corresponding vehicle from the NTAR vehicle list drop down box.

Rates

RR:

Repair:

Paint: ▼

Part Markup:

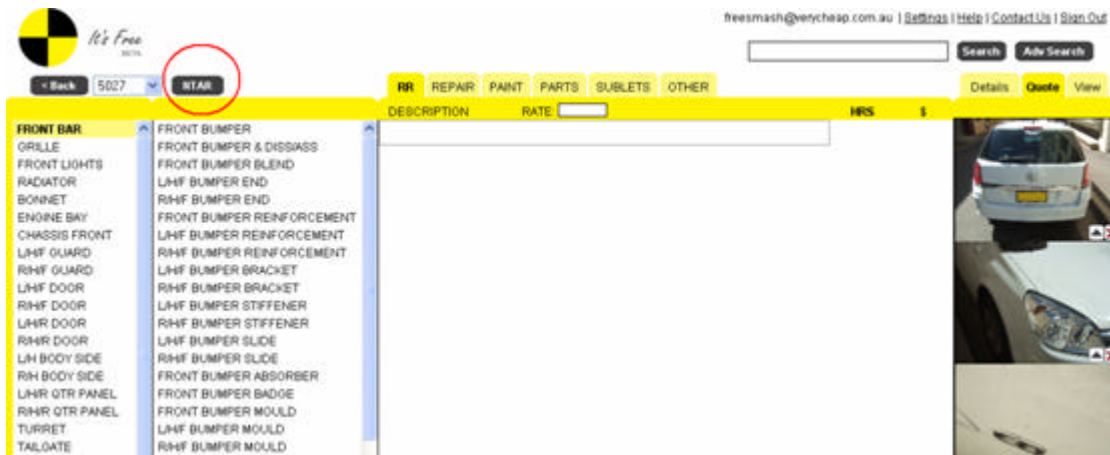
Body: ▼

NTAR vehicle list:

HOLDEN ASTRA TS SXI 02/2003	▼
HOLDEN ASTRA LD SLE 1987	▲
HOLDEN ASTRA LD SLX 1987	
HOLDEN ASTRA TR CITY 1996	
HOLDEN ASTRA TR GL 1996	
HOLDEN ASTRA TR GSI 1996	
HOLDEN ASTRA TS CD 04/2000	
HOLDEN ASTRA TS CD 10/1998	
HOLDEN ASTRA TS CDX 02/2003	
HOLDEN ASTRA TS CDX 02/2003	
HOLDEN ASTRA TS CITY 04/2000	
HOLDEN ASTRA TS CITY 06/2001	
HOLDEN ASTRA TS CITY 10/1998	
HOLDEN ASTRA TS SRI 10/2001	
HOLDEN ASTRA TS SXI 02/2003	
HOLDEN BARINA MB 1985	
HOLDEN BARINA MB ROADRUNNER 1985	
HOLDEN BARINA MF 1989	
HOLDEN BARINA MH 1991	
HOLDEN BARINA MH 1992	
HOLDEN BARINA ML FORMULA 1986	▼

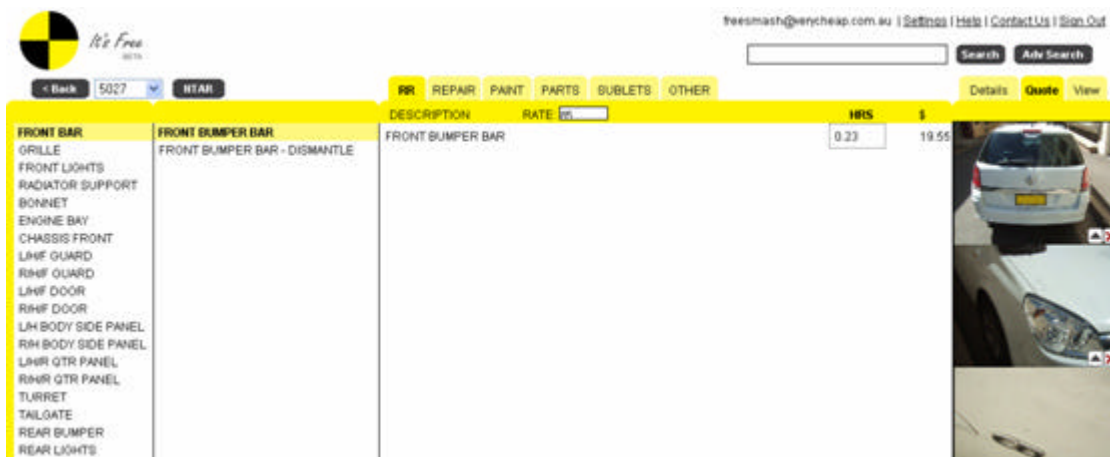
Using the NTAR pick list

From the details page go to the quote page. The quote starts with the standard Crashzone choice list, clicking on the NTAR button will load the NTAR descriptions and times for the vehicle selected from the details page.



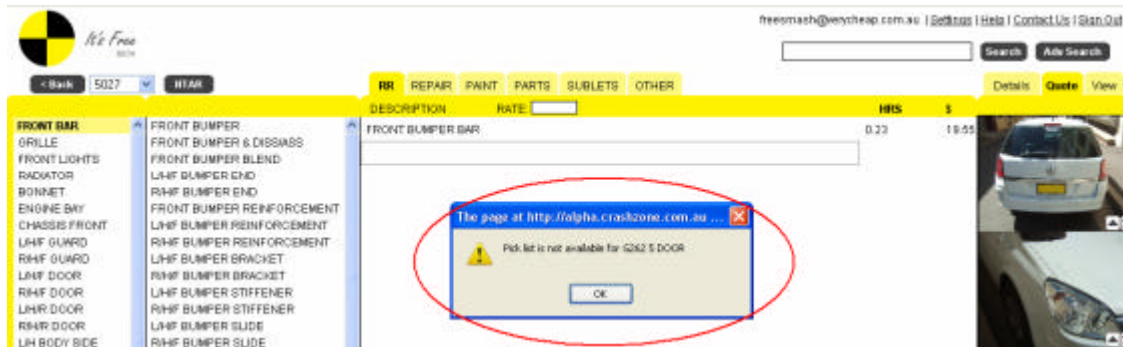
Once the NTAR button has been pressed the choice list will load with the NTAR times. You can now select items from the choice list.

- By clicking on the NTAR button you can toggle between the standard choice list and the NTAR choice list
- Please note that the times and description in the NTAR list are the same as listed on the NTAR website (www.ntar.com.au)
- Where possible you should choose items from the NTAR choice list as they have an embedded code that is used by the assessor. If the item is not in the list it means that it is not scheduled and you will have to determine your own time.



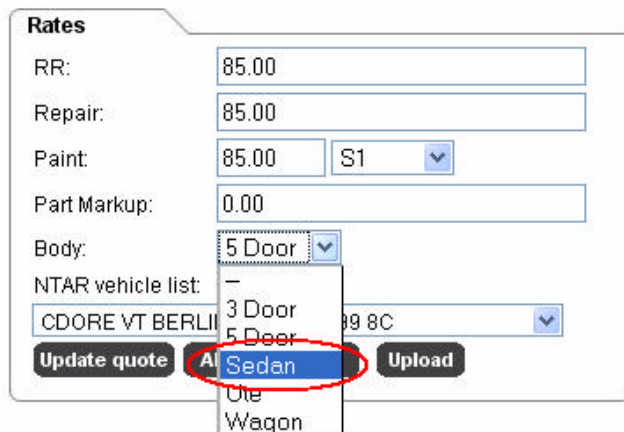
NTAR pick list not available

When clicking the NTAR button from the quote editor it is possible to get an error if the wrong body type has been selected from the details page or if the vehicle does not currently have any scheduled times.



In the above instance 5 door was selected in the details page when the car is actually a 3 door model.

To rectify go back to the details page and select the correct body type in the rates box



Paint loadings

Loading for the paint are to be added manually into the quote.

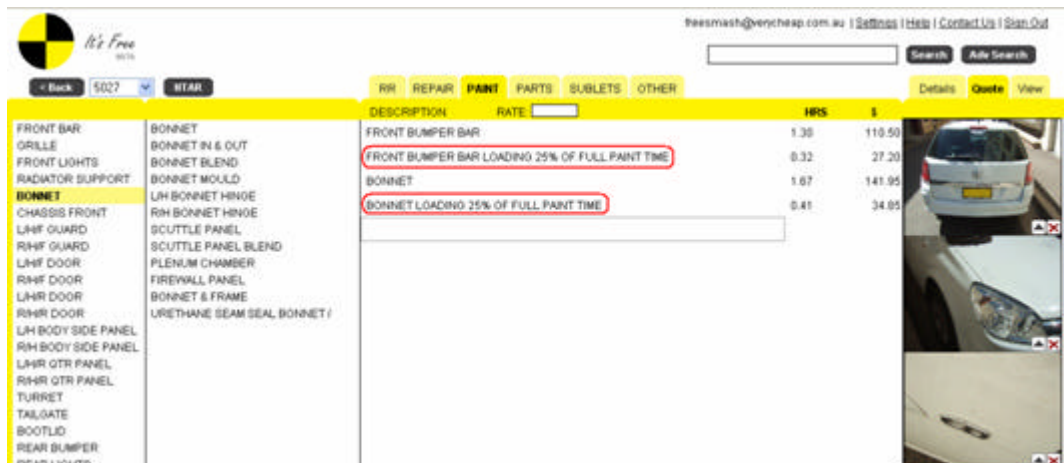
An allowance of 10% of the “OUT” paint time can be added when the repair time is between 0.25 hours and 0.99 hours inclusive

An allowance of 25% of the “OUT” paint time can be added when the repair time exceeds 1 hour on applicable components

An allowance of 10% of the “OUT” paint time can be added when a used panel is to be fitted

An allowance of 25% of the “OUT” paint time can be added when an exchange bumper bar is to be fitted

An allowance of 25% of the “OUT” paint time can be added where filler work is required on a new welded panel including door skins and quarter panels



DESCRIPTION	RATE	HRS	\$
FRONT BUMPER BAR		1.38	110.50
FRONT BUMPER BAR LOADING 25% OF FULL PAINT TIME		0.32	27.20
BONNET		1.67	141.95
BONNET LOADING 25% OF FULL PAINT TIME		0.41	34.05

Blend allowance

Blends are calculated manually, select the out paint from the pick and recalculate 70% of the total allowed time (type in text "BLEND")

RR	REPAIR	PAINT	PARTS	SUBLETS	OTHER
DESCRIPTION	RATE: 85		HRS	\$	
FRONT BUMPER BAR			1.30	110.50	
FRONT BUMPER BAR LOADING 25% OF FULL PAINT TIME			0.32	27.20	
BONNET			1.67	141.95	
BONNET LOADING 25% OF FULL PAINT TIME			0.41	34.85	
L/H FRONT GUARD - BLEND			0.85	72.25	

Crashzone other section and consumables

When quoting with NTAR Crashzone will automatically add the following items by default

- Environmental levy (\$ 6.00 by default)
- Paint setup time (.33hrs x by your shop rate)
- Panel consumables (\$3.35 x panel hours on the job)
a default amount of \$6.70 is given if there are no repair hours
- Paint consumables (\$5.83 x paint hours on the job)
- Paint materials (paint type rate x paint hours on the job)
S1 = \$17.00 S2 = \$18.92 M1 = \$20.51 M2 = \$23.65 M3 = \$26.93

The screenshot shows the NTAR software interface with the 'PAINT' tab selected. The 'OTHER' section is highlighted, showing the following items:

DESCRIPTION	RATE	HRS	\$
ENVIRONMENTAL LEVY			6.00
PAINT SETUP TIME @ 0.33 x 85.00			28.05
PANEL CONSUMABLES @ \$3.35 x 3.00			10.05
PAINT CONSUMABLES @ \$5.83 x 3.70			21.57
PAINT MATERIALS @ \$17.00 x 3.70			62.90

Sundry items and sundry labour

NTAR have a list of generic sundry items and labour that are not included with their standard scheduled vehicle list. Visit www.ntar.com.au to view the allowable items.

New Times and Rates

for the Auto Body Repair Industry [Select a vehicle](#)

Australia's leading source of real repair times

[NTAR Tools](#) A tool to help you with various allowance calculations

NOTE: Before downloading this file **open** Microsoft Excel, go to the tools menu, down to macros then security - set the level to medium, close Excel. Click on the website link and save the NTAR Tools file to your computer and open with Microsoft Excel, when asked **enable macros** for it to work correctly!

[NTAR Labour Rate Calculator](#) A labour rate calculator for Repairers. This file should be saved to your hard drive and then opened with Microsoft Excel.

[NTAR Calculator Q & A](#) Q & A on the labour rate calculator

[NTAR Labour Rate Guide](#) Labour Rate guide

[NTAR Q & A](#) Question and Answers document

[NTAR Materials and Consumables](#) Materials and Consumables guide

[NTAR Sundry Items Payment Guide](#)

[NTAR Sundry Items Labour Guide](#)

Crashzone NTAR quote example

Copyright © 2009 Crashzone.com.au It's free - 35

FREE SMASH REPAIRS PTY LTD.

FREE SMASH REPAIRS PTY LTD
 45 GREEK ST GLEBE NSW 2037
 Phone: 1300 721 090, Fax: 02 9660 1655
 Repairer Licence No: 999999
 Email: support@crashzone.com.au
 ABN: 63 125 055 996

Estimate No:5027

Quote Date: 14/05/2009
 Owner: GREG JONES, Ph 02 9934 1039
 Owner Address: 1 MAIN RD APPLE HILL
 Vehicle: HOLDEN ASTRA 5 DOOR 2006
 Reg No: EOW991
 VIN: WOOLAJG39393A03
 Colour: WHITE
 Odometer: 20332
 Insurance: NRMA
 Claim #:
 Estimator:

RR (Rate : \$85.00)		Hrs
FRONT BUMPER BAR		0.23
BONNET		0.80
	Sub Total Hrs	1.03
	Sub Total	\$87.55
Repair (Rate : \$85.00)		Hrs
FRONT BUMPER BAR		2.00
BONNET		1.00
	Sub Total Hrs	3.00
	Sub Total	\$255.00
Paint (Rate : \$85.00)		Hrs
FRONT BUMPER BAR		1.30
FRONT BUMPER BAR LOADING 25% OF FULL PAINT TIME		0.32
BONNET		1.67
BONNET LOADING 25% OF FULL PAINT TIME		0.41
	Sub Total Hrs	3.70
	Sub Total	\$314.50
	Total Labour Hrs	7.73
	Total Labour	\$657.05
Parts	Part No.	MUp \$
FRONT BUMPER REINFORCEMENT	23424242	120.33
FRONT BUMPER CLIPS x6	323424324	23.23
	Sub Total	\$143.56
	Sub Total + MUp	\$143.56
Other		\$
ENVIROMENTAL LEVY		6.00
PAINT SETUP TIME @ 0.33 X 85.00		28.05
PANEL CONSUMABLES @ \$3.35 x 3.00		10.05
PAINT CONSUMABLES @ \$5.83 x 3.70		21.57
PAINT MATERIALS @ \$17.00 x 3.70		62.90
	Sub Total	\$128.57
	Total	\$929.18
	GST	\$92.92
	Grand Total	\$1,022.10

ALL QUOTES ARE BASED ON VISUAL INSPECTION. OUR HOURS ARE FROM 7.30AM UNTIL 4.30PM MONDAY TO FRIDAY.

Crashzone It's Free Pty Ltd 45 Greek Street Glebe NSW 2037, ABN: 63 125 055 996
 Phone: 1300 721 090. Fax: 02 8569 0319. Website: www.crashzone.com.au